



Points to note:

- Parents/carers evenings next week – bookings open on Parentmail tonight at 7pm.
- Nursery applications deadline for September 2022 is today.
- PTA Cake Sale on playground, both sites, after school Thursday 10th February.
- Children's Mental Health Week dress up day – Friday 11th February. Voluntary donations welcomed.
- Book a tour to see the school in action – every Thursday after half term (see below).

Dear Parents and Carers,

We hope you have dried off after a very wet and windy start to the day this morning!

It has been a very busy week with a number of trips, special events and visitors to the school on top of some excellent learning by your children as you will see below.

This is with a background of continued high staff and child absence, and we appreciate your patience as we, along with other senior leaders and staff across the school are covering classes and filling in gaps throughout the day, which may have affected our availability to you. We thank you for your continued understanding as we strive to keep the provision as close to our intention as we can, whilst reducing the risks as far as we can to children and to the staff that teach and support them, at the same time as continuing to improve the school.

We had a very productive meeting with the co-chairs of the PTA yesterday with exciting plans for improving sustainability in the short and long term as well as getting some PTA events in the diary. We really appreciate the time, effort and expertise that the PTA and the wider parent/carer body bring to the school. You allow and challenge us to make the big dreams possible!

We also would like to open up availability for yourselves, our current parents and carers, to come and see the school 'in action' during next half term with tours in the mornings on both sites to see what happens during the day and to meet with us to talk together as we walk. There will be a limit on numbers for each tour, not just because of Covid safety, but also to make sure we can have good quality discussion together. Please see below for more details of dates and how to book.

With best wishes,

Mary-Lyne Latour (Headteacher Infants)

Sarah Atherton (Headteacher Juniors)



If you are worried about something
If you are worried about someone else.....



You can talk to
ANYONE who works
for the school

Safeguarding is the
responsibility of EVERYONE



Our first priority is to ensure all children and adults are safe.

Please do talk to any member of staff if you have any worries for yourself or others in our community.



We continue to have the following Covid measures in place:

- We ask all parents/carers to wear a face covering whilst on site (unless exempt)
- Staff will continue to wear face coverings in communal areas and in the playgrounds (unless exempt)
- Encourage families and staff to test themselves using a lateral flow test twice a week and increasing this to every day for 7 days when there has been a confirmed case in their class or household
- PCR testing required (not a lateral flow) if:
 - o Symptomatic (cough, fever, loss of smell/taste, headache, fatigue) – even if symptoms are mild.
Remember: whilst waiting for the result, your child should self-isolate and not come into school.
 - o There is a positive case in your household – children and fully vaccinated adults do not need to self-isolate whilst waiting for the results
 - o You are contacted by Test and Trace

For the 12 classes currently in 'additional measures' due to an outbreak of Covid in the class, please see the separate email that was sent to you on Parentmail.

Tours for Current Parents and Carers



If you would like to come and see the school during the school day, we will be holding small tours on the following dates, all starting at 9am.

Please contact enquiries@bellevilleschool.org if you would like to book a place!

Infants

(Nursery to Year 2)

Meteor:

Thursday 24th February
Thursday 10th March
Thursday 24th March

Webb's Road

Thursday 3rd March
Thursday 17th March
Thursday 31st March

Juniors

(Year 3 – Year 6)

Meteor:

Thursday 3rd March
Thursday 17th March
Thursday 31st March

Webb's Road

Thursday 24th February
Thursday 10th March
Thursday 24th March

Minibus drivers needed!

We have two fantastic PTA funded minibuses that we would like to use more for school trips and events – could you volunteer to drive?

You don't need to commit to many days or have a special driving licence or a DBS check as a member of staff will always accompany you, just the willingness!

We also offer a test drive session with Mr Gashi before your first trip to familiarise yourself with the bus.

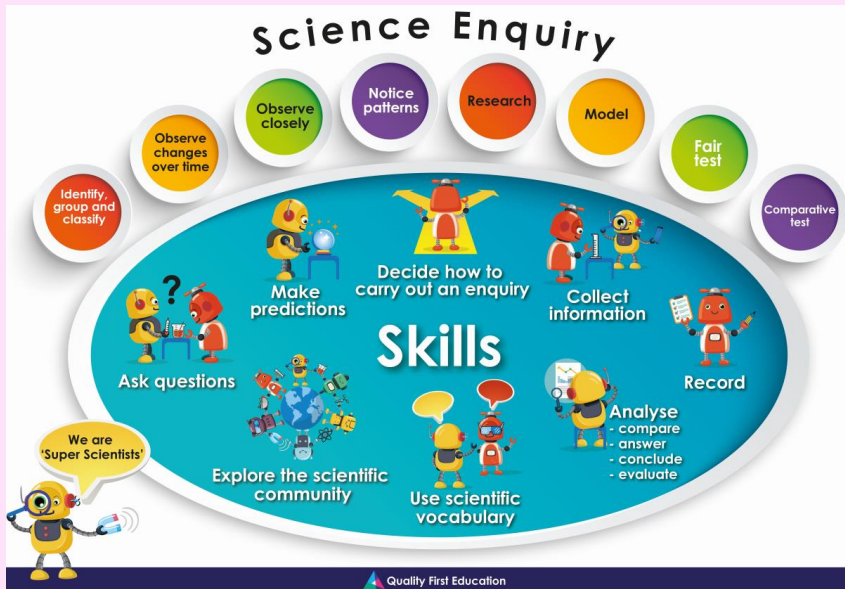
Contact us on enquiries@bellevilleschool.org if you are interested.





Visitors Impressed by Belleville Provision

School Improvement Priorities: Curriculum; Teaching and learning; Meeting the needs of all



We have had two visitors in school this week who have been working with our leaders to review and improve our provision for the children.

Laurie-Ann Lamb, a very experienced and excellent former headteacher came to see Early Years on Monday. Nick Flesher, who also works as an Ofsted inspector and school improvement adviser, came on Wednesday to look at our teaching of reading and science through the school.

They both talked with the school leaders for these areas, went to see lessons, talked with children and looked at their work. We were really pleased to get very positive feedback on what we offer but also how areas had been improved since they last came into school in autumn term.

Children's Mental Health Week



Friday 11th February – Dress to Express

Next week is Children's Mental Health Week. This year's theme is 'Growing Together'. Growing together is about growing emotionally and finding ways to help each other grow. Children will have the opportunity to think about how challenges can help them to grow as individuals as well as the benefits of trying new things and moving beyond their comfort zone.

For resources and practical tips on how to support your child's wellbeing please visit our [Wellbeing Hub](#) on our website as well as the [Place2Be](#) website.

To celebrate we will be holding a 'Dress to Express Yourself' fundraiser on Friday 11th. Children can come in dressed wearing their favourite colour or a unique outfit to express how they're feeling. Dress to Express is an opportunity for self-expression and celebrating a diverse range of emotions.

We will be raising money for Place2Be which is a national children's mental health charity, working in and with schools to improve the mental health, confidence and emotional wellbeing of children.

Please use the following link [CLICK HERE](#) if you would like to donate – this is entirely voluntary.

Many thanks,

Rachel Carruthers

Assistant Headteacher - Personal Development and Wellbeing





Year 3 Explore the Egyptian Artefacts at the British Museum



There was much excitement in Year 3 this week as classes went out on their trip to the British Museum to see real artefacts from Ancient Egypt.

They also had a bonus tour through central London on the school minibuses seeing the Houses of Parliament, the London Eye and St Thomas's Hospital on the way.

Thank you to the parents/carers who supported this trip!



Happy Lunar New Year
Gong hei fat choy – 'Wishing you happiness and prosperity'

恭喜发财



Chinese Lunar New Year celebrations were in full swing this week in Early Years.

Children used chopsticks to pick up noodles and made red and gold paper lanterns to hang around the classroom.

Nursery learned about how Chinese New Year is celebrated, listened to the story of "The Big Race" and each child took home a special red envelope filled with chocolate coins too! Yum!

Reception sampled some delicious food, practised their Chinese writing and made their own tiger masks to welcome the Year of The Tiger!



Belleville

Primary School

News





Belleville

Primary School

News





Year 5 and Year 6 Residentials Return

We are really pleased to have sent out details of two new residential visits for our older children this week.

We go on overnight residentials to ensure all children have had the experience of staying away from home and accessing challenging and adventurous activities that we cannot find locally. There always a great bonding and team building experience for the children and staff as well as having a go at bushcraft, abseiling and gathering round a campfire to name just a few of the activities.

It has been Belleville's approach for many years to aim to support families so that all children who want to go on school journeys are able to go – we use some of our Pupil Premium funding and the school's Honey Pot Fund to help with this.

Year 5 – Isle of Wight

April 2022

3 days and 2 nights



Year 6 - Grosvenor Hall

June 2022

5 days and 4 nights





This week our Year 5 and Year 6 girls represented the school at a football competition at Southfield's Academy with 22 schools showing up for the event.

The girls had many hard fought games in this 7-a-side competition. Every girl worked hard at the positions they played, successfully defending our goalie and making some fantastic passes and efforts when attacking! It was a wonderful day out and amazing to see so many girls celebrating the sport of football.



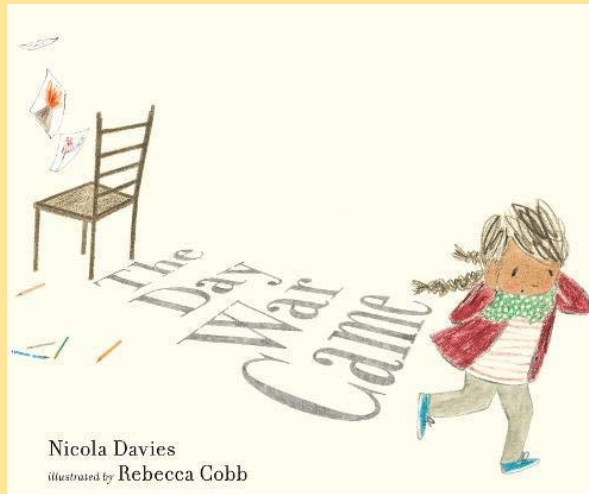
The UEFA Women's Euro football is taking place this summer with matches being held in London - good luck England women!



Ms Ounyemi
PE Teacher



And finally, some poetry . . .



In English this week, Year 5 have been reading 'The Day war Came' by Nicola Davies (who will be dropping into Belleville classes via Zoom very soon).

The book has been described by [THE BOOK TRUST](#) as: 'A heartbreaking picture book that perfectly explains the displacement of people, and especially children, in war, and the trauma experienced by people forced to leave their homes. Rebecca Cobb's illustration is moving and emotive without being scary, and perfectly conveys the sadness of the little girl; the text, a devastatingly simple and deeply affecting prose poem, pulls no punches.'

The children wrote their own poems in response with moving use of language, like this one from Vinya in 5F:

Behind that door was fear and anger.

Behind that door was depression and disparity.

Behind that door was loneliness and darkness.

Behind that door was a lost heart.

Behind that door was pain and melancholy.

Behind that door was a girl with a distraught, empty soul.

Behind that door was a brave girl with a small heart and very small hope.

Nothing to do...

Nothing to see...

Nothing and nobody to love.



TERM DATES 2021-2022

Spring Term 2022

Parent/Carer evenings:	Tuesday 8 th / Wednesday 9 th / Thursday 10 th February
Last day of Spring 1 term:	Friday 11 th February
Spring half term holiday:	Monday 14 th February – Friday 18 th February
First day of Spring 2 term:	Monday 21 st February
Last day of Spring 2 term:	Friday 1 st April

Summer Term 2022

Inset Day:	Tuesday 19 th April – school closed to children
First day of Summer 1 term:	Wednesday 20 th April
Bank holiday:	Monday 2 nd May – school closed to children
Local Elections:	Thursday 5 th May – Nursery closed (Nursery used as a Polling station)
Last day of Summer 1 term:	Friday 27 th May
Spring half term holiday:	Monday 30 th May – Friday 3 rd June
First day of Summer 2 term:	Monday 6 th June
Last day of Summer 2 term:	Thursday 21 st July

TERM DATES: 2022-2023

Autumn Term 2022

Inset Days:	Thursday 1 st – Friday 2 nd September – school closed to children
First day of Autumn 1 term:	Monday 5 th September
Last day of Autumn 1 term:	Friday 21 st October
Autumn half term holiday:	Monday 24 th October – Friday 28 th October
First day of Autumn 2 term:	Monday 31 st October
Last day of Autumn 2 term:	Friday 16 th December

Spring Term 2023

Inset Day:	Tuesday 3 rd January – school closed to children
First day of Spring 1 term:	Wednesday 4 th January
Last day of Spring 1 term:	Friday 10 th February
Spring half term holiday:	Monday 13 th February – Friday 17 th February
First day of Spring 2 term:	Monday 20 th February
Last day of Spring 2 term:	Friday 31 st March

Summer Term 2023

Inset Day:	Monday 17 th April – school closed to children
First day of Summer 1 term:	Tuesday 18 th April
Bank holiday:	Monday 1 st May – school closed to children
Last day of Summer 1 term:	Friday 26 th May
Spring half term holiday:	Monday 29 th May – Friday 2 nd June
Inset Day:	Monday 5 th June – school closed to children
First day of Summer 2 term:	Tuesday 6 th June
Last day of Summer 2 term:	Friday 21 st July